



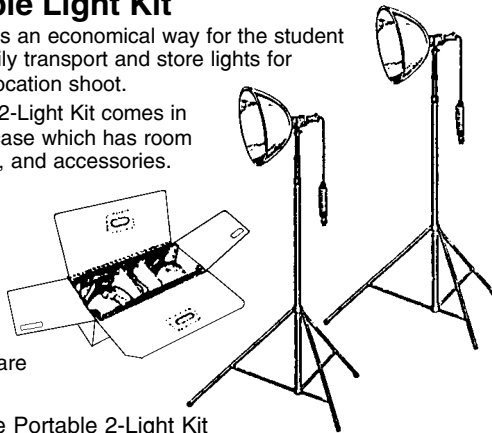
Deluxe Portable Light Kit

This 2 light kit provides an economical way for the student or professional to easily transport and store lights for the home, studio, or location shoot.

The Samigon Deluxe 2-Light Kit comes in an oversize carrying case which has room for a third light, lamps, and accessories.

Kit includes:

- 2- Deluxe 3-section lightstands (extend to 7¼ ft.)
- 2- 10" Reflectors
- 2- Deluxe socket sets with wooden handles and hardware
- 2- Ball studs



- CSA105 Deluxe Portable 2-Light Kit
- CSA105INT Deluxe 2-Light Kit

To assemble a 3-way set-up, order an additional single light kit (#CSA124).

- CSA124 Single-Light Kit (stand, reflector, socket set)
- CSA124INT Single-Light Kit with Lamp
- CSA626 Replacement Lamp (26W 5100°K)
- CSA630 FL-360 Light Kit

GE/Sylvania Photoflood Lamps

For use in clamp socket with reflectors.



Stock #	Ansi #	Description	Master Qty
DL/BBA	BBA	#1, 250W- 3400°K	24
DL/BCA	BCA	#B1, 250W- blue	24
DL/EBV	EBV	#2, 500W- 3400°K	24
DL/EBW	EBW	#B2, 500W- blue	24
DL/ECA	ECA	250W- 3200°K	24
DL/ECT	ECT	500W- 3200°K	24

(We reserve the privilege of substituting Sylvania, if out of GE)
For projection lamp listing, etc. see page F-5

Testrite Fotolite Stands

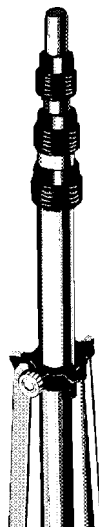
Made with aluminum tubing. They have clutch type locks (like camera tripods) which lock easily in any position; sections cannot pull apart.

100/3: An industry favorite, for lightweight, rigidity and reasonable price. 3-section stand. Opens to 7¼ ft. Closes to 31". Weighs: 1lb. 9oz.

TIC-22: All anodized tubing and leg assembly. 4 sections. Black anodized tripod type locking devices. Opens to 7ft. Closes to 23". Weighs 23oz.

TIC-25: Same as above, except 5 sections. Opens to 9ft. Closes to 25". Weighs 2lbs.

Master: 3 (for all 3 stands).

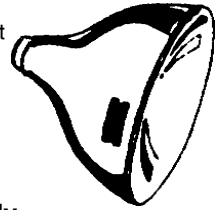


		Sections	Opens to	
CTE225	Stand	3	7¼ ft.	100/3
CTE210	Stand	4	7 ft.	TIC-22
CTE220	Stand	5	9ft.	TIC-25

Chelsea Reflectors

Parabolic shaped reflectors offer the most efficient light spread. Reflectors are internally finished in satin aluminum. Bulk packed for economy.

- CCH206 Pk/6, 6" Reflectors
- CCH210 Pk/12, 10" Reflectors
- CCH212 Pk/12, 12" Reflectors



Order in pack quantities only

Chelsea Clamp, Cord & Socket Set

Strong coil spring holds clamps firmly to any support. Has jaws which are rubber covered to protect furniture or other surfaces.

All sockets mounted on twin ball-joints, knurled to prevent any slippage once set. Twin button on/off switch conveniently located on socket. Unit rated up to 600W & 250V.

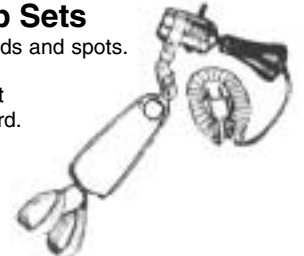


- CCH250 Pk/12, Clamp, Cord & Socket Set

Order in pack quantities only

Testrite Socket and Clamp Sets

Provides rigid support for all reflector floods and spots. Rubber covered spring hand clamp. High heat (660W 250V) sockets with heat resistant push through switch and 8ft. cord. Red safety knob on the socket allows "cool & easy" handling.



- CTE441 Metal Socket & Clamp Set, 8ft. cord CW
- CTE464 Phenolic Socket & Clamp Set, 10ft. cord CWP

Testrite Metal Socket and Cord Set

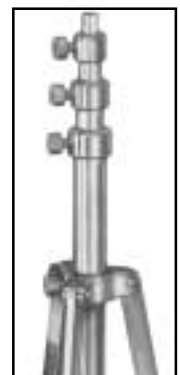
High heat socket with 8ft. cord, swivel, wood "cool" knob, and light stand adapter. Fits directly onto 3/8" top sections of lite stands. Light switch is located on the socket. Uses 75 watt maximum bulb.



- CTE443 Cord and Socket Set, Metal SCA
- CTE444 Cord and Socket Set, Phenolic SCAP

Pic Standard Stand

4 sections, bright finish aluminum. Top section will not fall through. Stop marks show maximum extension on each section. Metal thumb screws. Weighs 1lb. 10 oz. Closes to 22". Opens to 7 ft. Master: 12.



- CAP207 Standard Stand 122
- CAP251 Thumb Screws

FOR FAST DELIVERY CALL TOLL FREE!

EAST
1-888-ARGRAPH
OR 1-800-526-6290

WEST
1-888-WESTARG
OR 1-800-323-9069



Professional Light Stands

Samigon Professional light stands are made from the finest quality materials. The legs are high strength aircraft grade aluminum and the cross supports are reinforced aluminum alloy.

The light stand collars and bases are Nylon 66, strong as steel and lighter than aluminum.

Samigon light stands are black anodized to prevent reflections and lens flare.



CSA201 Mini Light Stand

Specifications: 3-section, closes to 27", extends in use from 28" to 80". weight: 2lbs. 6oz.

CSA202 Backlight Pro Stand

Specifications: 2-section, height 34", weight: 2lbs. 6oz., closed length 20", leg spread 24", center tubing diameter 1", legs 1" bar

CSA203 Lightweight Light Stand

Specifications: 4-section, height 7ft. 2", weight: 2lbs., closed length 25.5", leg spread 31.5", center tubing diameter 1", legs 1" bar.

CSA204 Lightweight Pro Light Stand

Specifications: 4-section, height: 7½ft., weight: 3lbs., closed length 28", leg spread 35", center tubing diameter 1", legs .9".

CSA206 Compact Pro Light Stand

Specifications: 3-section, height: 8ft. 2", weight 3lbs. 8 oz, closed length 34", leg spread 43", center tubing diameter 1", leg .9".

CSA208 Pro Light Stand

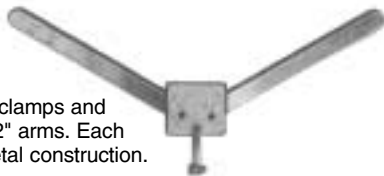
Specifications: 4-section, ht: 10 ft. 8", wt: 4 lbs, closed length 35", leg spread 43", center tubing diameter 1", legs .9".

CSA210 Master Pro Light Stand

Specifications: 4-section, height: 12 ft. 8", weight: 4 lbs. 6 oz., closed length 42", leg spread 43", center tubing diameter 1.3" legs 1".

Testrite Swing Arm Lite Stand Swivel

Fits all makes of lite stands. Two clamps and reflectors can be placed on the 12" arms. Each arm swings independently. All metal construction.



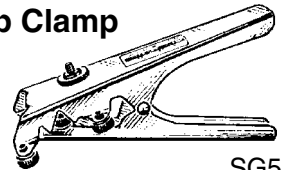
CTE445 Swing Arm Lite Stand Swivel SA-1

CPM/Delta Stud Adapter

CCP21216 5/8" to 3/8" Stud Adapter 21216
CCP21218 3/8" to 5/8" Stud Adapter 21218

Testrite Fitolite Super Grip Clamp

Positive holder for reflectors, sockets and lamps. Jaws with rubber tips give positive grip to any shape. 1/4" x 20" screw.



CTE450 Super Grip Clamp SG5

CPM/Delta "A" Grip Clamps

Hundreds of uses. Extremely strong. Heavy, no-scratch, orange vinyl covered tips & grips. Clamps to openings, doors and foam boards. Lifetime limited warranty. (Shown with 1/4" x 20" screw and 3/8" stand adapter sold separately).



CCP01600 "A" Grip Clamp, 1/2" 01600

Testrite Flash Shoe Adapter

Fits 3/8" tube. Shoe holds flash or strobe light, removable- exposes 1/4-20 male thread.



CTE431 Flash Shoe Adapter FSA-6

Testrite 3/8" Stud Adapter

Has female 1/4" x 20" threads.



CTE502 3/8" Stud Adapter PRO-A1

Testrite Flash Shoe Adapter

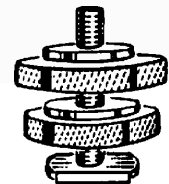
Has 1/4-20 female threaded base.



CTE433 Flash Shoe Adapter PRO-A5

Testrite Flash Shoe Adapter, FSA8

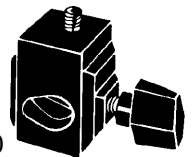
Fits flash shoe on video and all cameras with adjustable 1/4" x 20" screw top.



CTE468 Shoe Adapter FSA8

Testrite Light Stand Adapter

Precision die cast metal housing. Fits light stands with 3/8", 1/2" or 5/8" top. Has 1/4" x 20" thread to hold accessories.



CTE486 Light Stand Adapter LSA10

Testrite BA Ball Adapter

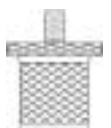
Fits 3/8" top of light stands. Removable ball exposes 1/4" thread.



CTE447 BA Ball Adapter

Testrite Camera Stud and Lock Nut

Audio thread to camera stud and lock nut.



CTE435 Camera Stud/Lock Nut TA-3

PERSONAL SERVICE IS OUR #1 PRIORITY



East: 111 Asia Place, Carlstadt, NJ 07072
West: 4055 W. Shaw Ave.#105, Fresno, CA 93722

(201) 939-7722
(559) 277-3572

FAX: (201) 939-7782
FAX: (559) 277-3574