



What Makes Sirui Professional Tripods Your Best Choice?

Forged for Greater Strength and Reduced Weight

Instead of using traditional casting methods typical of tripod construction, Sirui is a pioneer in using forging technology in manufacturing. During the forging process, the deformation and recrystallization of metal causes the structure of the metal to be more welded together and compact - greatly increasing its strength-to-weight ratio. This enables Sirui to build products with exceptional strength and durability, that are surprisingly light.

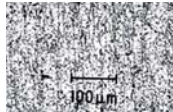
Forging ensures the integrity of metallic fibers so that it remains consistent inside & out. Good integrity allows for a longer lifetime as well as better performance.

In fact, the forging process can create parts that are much stronger than those manufactured by any other metalworking process.

Forged



The added strength of forging allows thinner, lighter components.

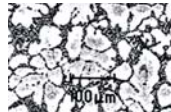


Micro structure of the metal after forging. The consistent structure provides very impressive strength.

Cast



Others' cast components must be thicker and heavier to provide the same strength.



Micro structure of the metal after casting process. Inconsistent structure with many gaps and weaknesses.



8 Layers of Carbon Fiber for Superior Load Capacity

SIRUI is one of the few manufacturers who make their own Carbon fiber leg tubes. The use of 100% carbon fiber and 8 cross pattern layers, makes SIRUI tripods and monopods capable of supporting impressive load capacities, while providing a lightweight product. In addition to providing high strength and low weight, carbon fiber is also highly resistant to temperature changes, friction (no need for lubrication) and corrosion.



Custom Anodized Surface Treatment

All SIRUI products undergo a special anodized surface treatment that makes all metal surfaces highly resistant to wear and increases durability and weather resistance. Anodizing is an environmentally safe electro-chemical process. This also prepares the surface to provide better adhesion of colored finishes.



Temperature Tolerance Test

Photographers often work in extreme environments, like blazing deserts or sub-zero mountaintops. It is vital that your equipment works under these conditions. That is why we torture-test all of our products - under conditions that far exceed what most people will ever experience (-40° ~ 212°F/-40° ~ 100°C). SIRUI is the first Chinese manufacturer to continuously perform the 4-hour test (equal to many years of use) on all products.



Certified Longevity Tests For Quality & Reliability

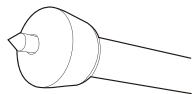
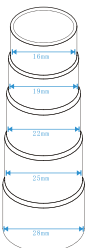
To confirm the quality and reliability of SIRUI tripods (and our dedication to details), an independent testing lab (SGS) subjected the leg angle lock spring mechanisms to exhaustive longevity tests. The test reports show that even after 100,000 actuations, the springs continued to perform perfectly!



Half-turn Leg Locks

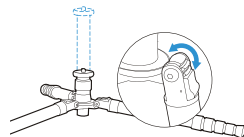
To lock the legs of SIRUI tripods/monopods, we utilize twisting locks for maximum reliability and stability. Simply twist the rubber leg locks 1/2 turn and the legs will extend by themselves.

Precision Leg Tubes
The difference in diameter of N/TX/R/SN series tripod tubes is only 3 mm. Thanks to precision manufacturing, the legs open and close easily, while the small diameter difference provides added leg stability.



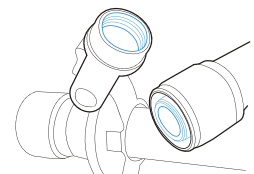
Retractable Steel Spikes

For added stability outdoors, SIRUI 2/3/4 Series tripods and monopods have retractable stainless steel spikes, stored inside the slip-resistant rubber feet.



Free Short Center Column

TX/N/M/SN/R3/R4 series tripods allow low angle shooting for unique perspectives and macro photography. And most models include a free short center column (excludes R series and T-005/025) for added flexibility.



Convert to Monopod

The detachable leg of S-N/N/M series tripods lets you transform your tripod into a monopod! Reduces the amount of equipment you need to carry and makes your camera bag or backpack lighter.

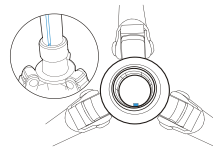


Sirui 6 Year Warranty

Sirui backs up its products with a 6 Year Warranty!

Non-Twist Center Column/Legs

All SIRUI center columns and legs have keyed, grooved channels, that prevent twisting - providing additional stability and safety for your photographic equipment.



www.argraph.com

Address: 111 Asia Place, Carlstadt, NJ 07072
Phone: 201.939.7722

Follow us at twitter.com/Argraph



What Makes Sirui Professional Ball Heads Your Best Choice?

CAM Produced

Each assembled component of SIRUI Ball Heads is produced by CAM (Computer Aided Manufacturing) - the ultimate in precision manufacturing techniques.

Aviation Grade Aluminum Alloy

SIRUI ball heads are made of aviation quality aluminum alloy 7075-T6 and 6067-T6 for long life and maximum strength.

SIRUI Precision Manufacturing - 0.01mm tolerances!

SIRUI uses a special manufacturing technique that produces the support ball with tolerances to within 0.01mm of a perfect sphere. This uncompromising precision guarantees superior performance and smooth operation for any type of 35 mm, DSLR, medium or large format camera system.



Sirui Designed Dual Bevel Ball Head Locks

The interior locking system in SIRUI Ball Heads uses SIRUI designed double bevel locks for superior locking performance and reliability. Most ball heads only use a single, less efficient interior locking system.

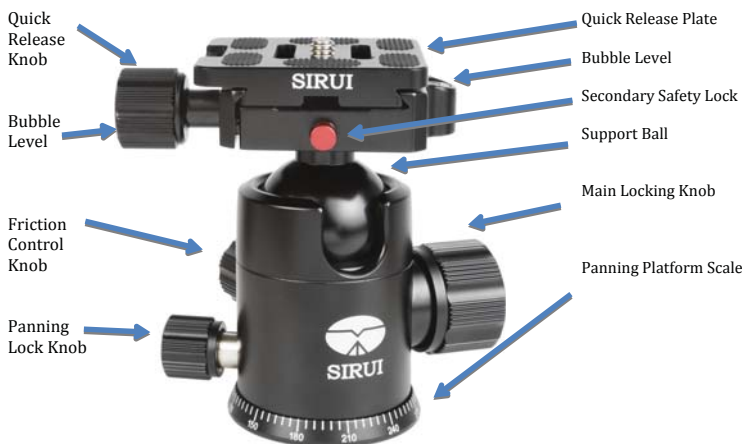
Patented Safety Lock

The patented safety lock design, and SIRUI quick release plates, effectively prevent the camera from accidentally sliding off of the ball head. And most Arca-compatible quick release plates can be used on SIRUI Ball Heads. (Note: safety lock design not available from other brands).



Custom Anodized Surface Treatment

All SIRUI products undergo a special anodized surface treatment that makes all metal surfaces highly resistant to wear and increases durability and weather resistance. Anodizing is an environmentally safe electrochemical process. This also prepares the surface to provide better adhesion of colored finishes.



Sirui G-Series Ball Head

Separate adjustment knobs

Separate adjustment knobs for panning, friction control and locking, provide maximum control and flexibility.

GX Series Ball Heads



1. Separate control knobs for panning, locking and friction control.

2. Dual Built-in help make alignment



3. Sirui's unique locking mechanism provides unequalled locking force even with loads up to 44lb (20kg)!

KX Series Ball Heads



1. Separate control knobs for panning and locking. Friction knob is conveniently located on the main locking knob.

2. Triple-bubble levels allow precise horizontal leveling for critical shooting solutions.



3. Sirui's unique locking mechanism provides unequalled locking force even with loads up to 77lb (35kg)!



Panning base

The panning base is designed with a 360 degree dial. Having a separate panning base lock knob provides greater accuracy for panning and panoramic shooting.



High Quality Quick Release Plates

All SIRUI TY Series Quick Release Plates are made from forged aluminum alloy. The forging technique produces high-density metals with much greater strength than die-cast methods.

Model Specific Quick Release Plates

When using long lenses or heavy cameras, it is very important to make sure that there is a perfect fit between the camera and quick release plate. For that reason, SIRUI offers a selection of quick release plates for specific types and models of cameras.



The red anti-twist stoppers are designed to prevent the camera from shifting or twisting as you move the ball head. And the Special QR Plates are model specific for a perfect fit.



Conveniently hand tighten or use the included allen wrench to secure your camera/lens onto the Quick Release Plate



Comes with protective storage case



TY Series QR plates are designed with slide-stopping rubber mats to prevent the camera/lens from moving while tightening the screw.



Sirui 6 Year Warranty
Sirui backs up its products with a 6 Year Warranty!



www.argraph.com

Address: 111 Asia Place, Carlstadt, NJ 07072
Phone: 201.939.7722

Follow us at twitter.com/Argraph

